

SHAMBLIN THEATRE



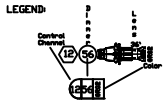
"After each event the crew is responsible for resetting the lighting plot to its original state from the information below. Failure to comply will result in additional charges to the event."

Jamie Shankland, Dir. ETS

BALCONY

FLOOR

STAGE



Source Four/Lens

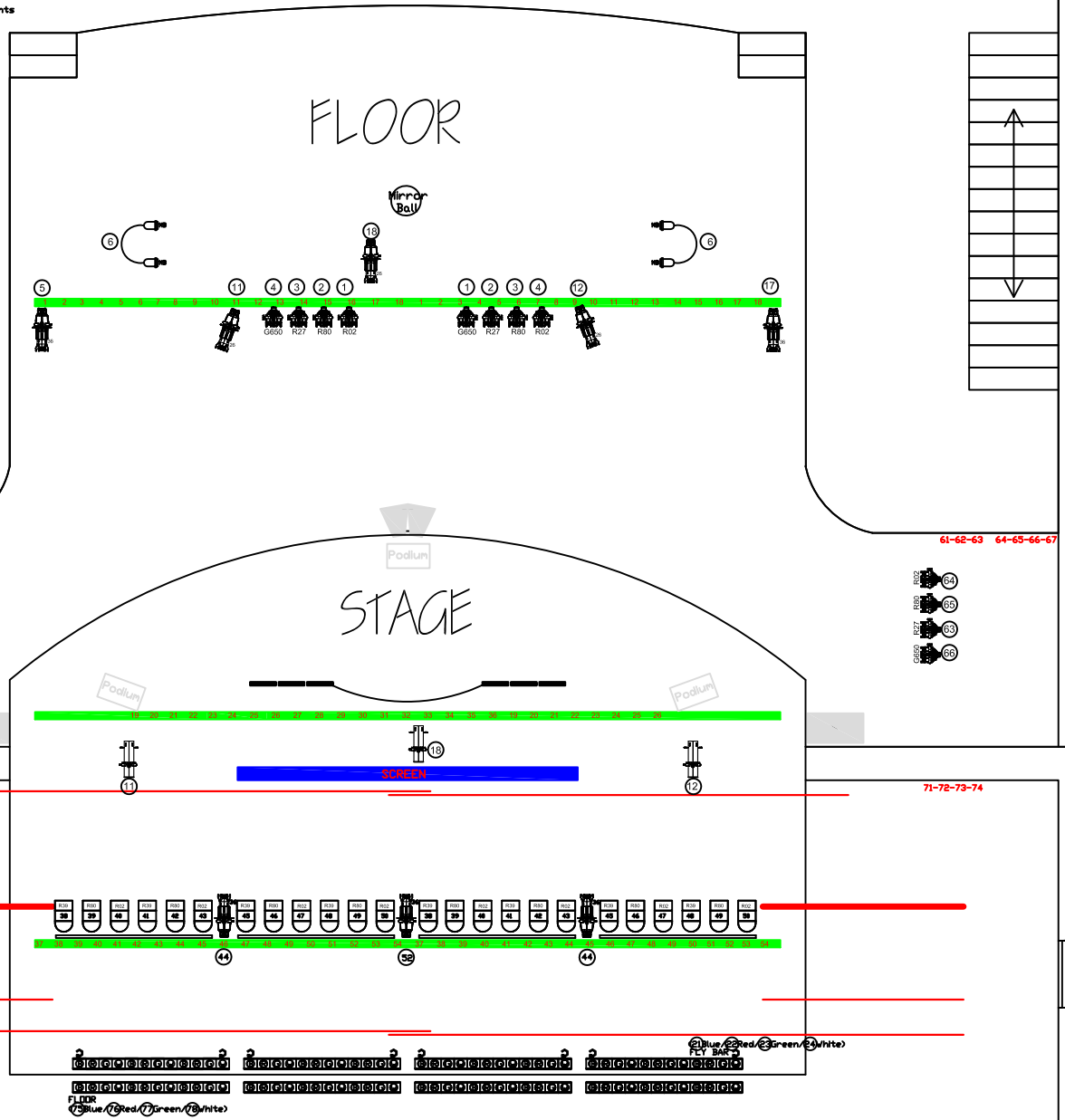
Parrel/Lens Pin Spot

Zoon

Par 64 x6 bar

Cyc Lights

Chauvet Mini Diamond Strip



PRODUCED BY AN AUTODESK EDUCATIONAL PRODUCT

PRODUCED BY AN AUTODESK EDUCATIONAL PRODUCT

55-56-57-58 59-60-61

61-62-63 64-65-66-67

67-68-69-70

71-72-73-74

75-76-77-78

79-80-81-82

